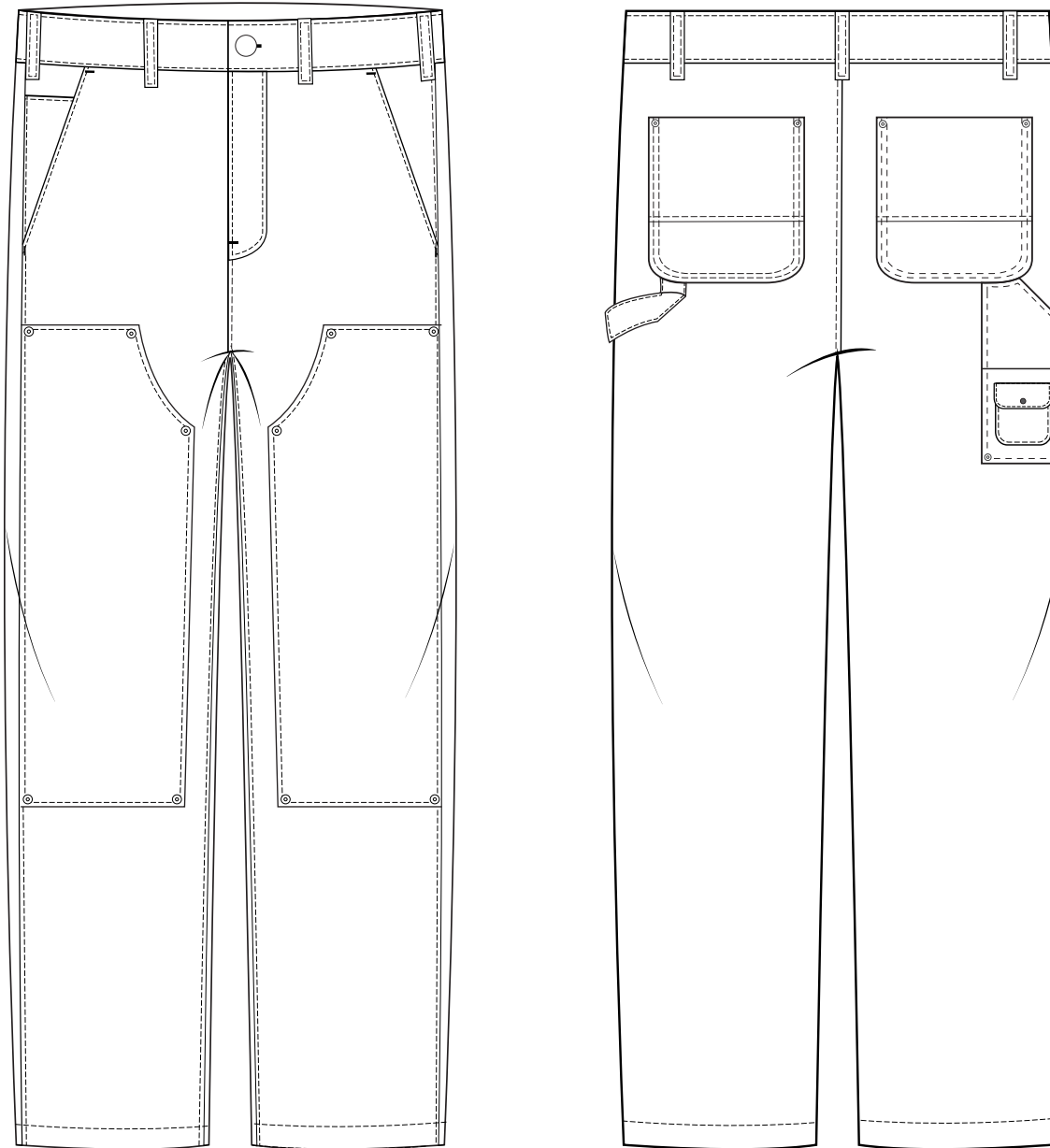


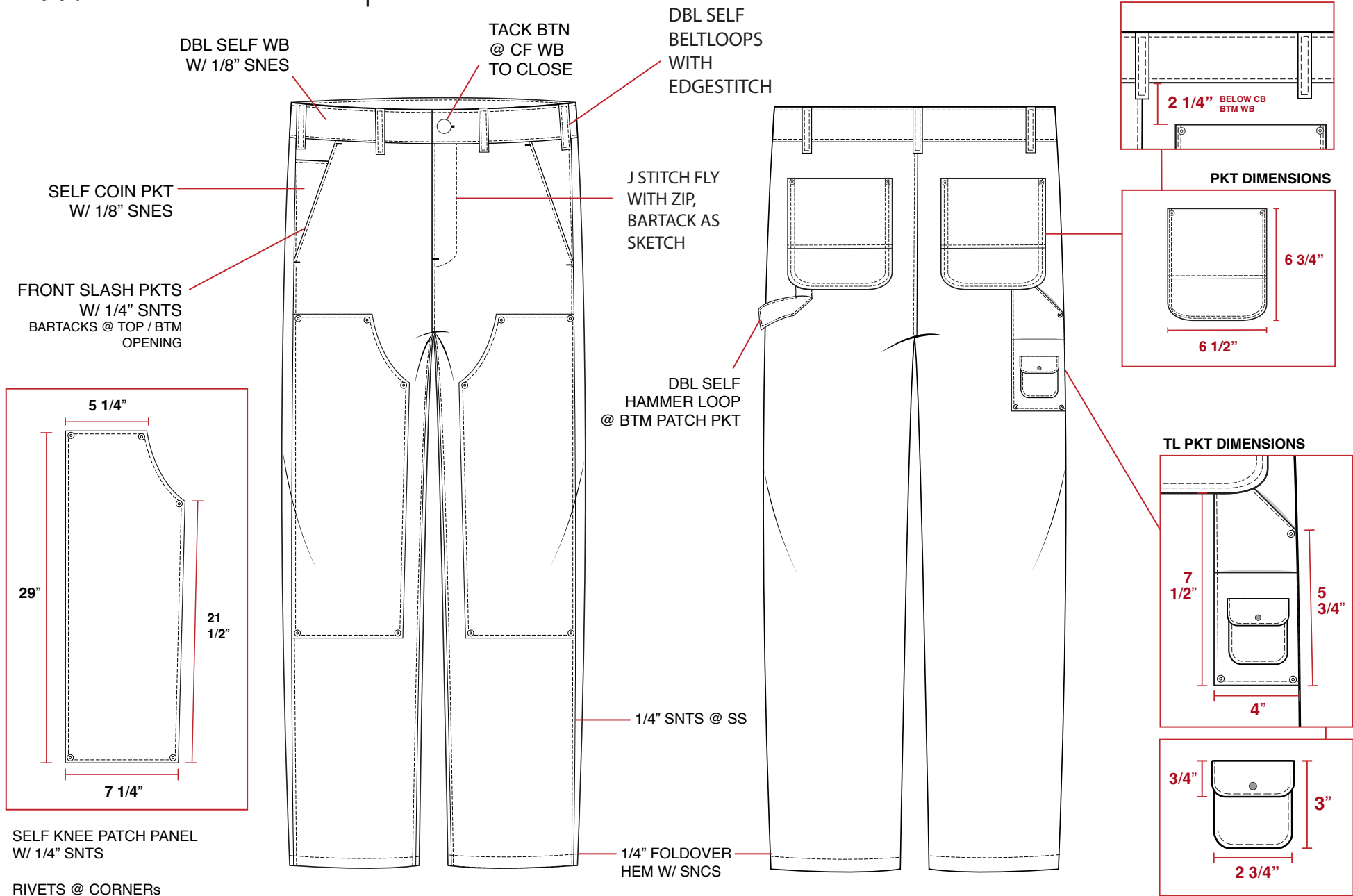
Elwood COVER SHEET | EP00016



STYLE #:	EP00012	SAMPLE SIZE:	32	FACTORY:	GUOSHENG	DESIGNER:	TIMOSHA K
DESCRIPTION:	DENIM INDUSTRY PANT	SIZE RANGE:	26-38	SEASON:	FALL 2023	SENT:	04.19.23

*Sketches, Artwork & Washes shown are for representation only. Please refer to actual samples and sumbits for color/technique.

Elwood CONSTRUCTION | EP00016



STYLE #:	EP00012	SAMPLE SIZE:	32	FACTORY:	GUOSHENG	DESIGNER:	TIMOSHA K
DESCRIPTION:	DENIM INDUSTRY PANT	SIZE RANGE:	26-38	SEASON:	FALL 2023	SENT:	04.19.23

*Sketches, Artwork & Washes shown are for representation only. Please refer to actual samples and sumbits for color/technique.

Elwood BOM | EP00016

Item	Type	Description	Colorway 1	Colorway 2	Colorway 3
SELF	FBC	TBD DENIM	TBD	TBD	TBD
LINING FOR POCKETING	LINING	W16	TBD	TBD	TBD
CF FLY	TRIM	YKK-045-MTCB-SALS-RG-#4.5 METAL CLOSED BOTTOM ZIPPER W/ SEMI AUTO-LOCK SLIDER AND REGULAR PULL	TBD	TBD	TBD
CF TACK BUTTON	TRIM	32L X 1, G21150 TEXTURED TACK BUTTON	TBD	TBD	TBD
RIVETS	TRIM	7L RIVETS X 17, 2 @ EACH FRONT POCKET, 5 @ EACH THIGH PATCH	TBD	TBD	TBD
TOPSTITCH THREAD	THREAD	6 SPI X 30 WEIGHT	TBD	TBD	TBD
SEWING THREAD	THREAD	DEFAULT FTY SEWING THREAD			TBD
MAIN LABEL	LABEL	TBD LOOP LABEL INSERTED INTO NECK SEAM	TBD	TBD	TBD
CARE/CONTENT LABEL	LABEL	TBD CARE/CONTENT LABEL	TBD	TBD	TBD
ELWOOD HANGTAG	TRIM	TBD ELWOOD HANGTAG W/SAFETY PIN	TBD	TBD	TBD
WASH	WASH	TBD	TBD	TBD	TBD

STYLE #:	EP00012	SAMPLE SIZE:	32	FACTORY:	GUOSHENG	DESIGNER:	TIMOSHA K
DESCRIPTION:	DENIM INDUSTRY PANT	SIZE RANGE:	26-38	SEASON:	FALL 2023	SENT:	04.19.23

*Sketches, Artwork & Washes shown are for representation only. Please refer to actual samples and subbits for color/technique.

Elwood SPEC SHEET | EP00016

	TOL (-/+)	REQ 2ND FIT SPEC (32) 3/22/23 KSD	2ND FIT SPEC (32) 4/19/23 KSD	REQ PP SPEC (32) 4/25/23 KSD	NOTES
WAIST AT TOP ALONG THE CURVE	1/2	33 1/4	34	34	KEEP
WAISTBAND HEIGHT	1/8	1 1/2	1 1/2	1 1/2	
FRONT RISE: INCLUDING WB	1/4	13	13 1/4	13	BTS
BACK RISE: INCLUDING WB	1/4	16 1/2	16 1/2	16 1/2	
HIP: 3" UP FROM CROTCH @ 3 POINTS	1/2	44 1/2	45	44 1/2	BTS
THIGH: 1" BELOW CROTCH	3/8	26 1/2	26 1/2	26 1/2	
KNEE PLACEMENT BELOW CROTCH	1/4	15	15	15	
KNEE WIDTH	1/4	20 1/2	21	20 1/2	BTS
LEG OPENING	1/4	18 1/2	18	18 1/2	BTS
INSEAM	1/4	31	31 1/4	31	BTS
HEM HEIGHT	1/8	1/2	1/2	1/2	
CF ZIPPER LENGTH	1/8	6 1/2	6 1/2	6 1/2	
J STITCH LNGTH FRM WAIST SEAM TO BTM STITCHLINE	1/8	7	7	7	
FLY WIDTH	1/8	1 1/2	1 5/8	1 1/2	BTS
BELT LOOP LENGTH	1/8	2 1/4	2 3/8	2 1/4	BTS
BELT LOOP WIDTH	1/8	1/2	1/2	1/2	
FRONT POCKET WIDTH - AT TOP ALONG WB JOIN SEAM	1/4	3 1/2	3 1/2	3 1/2	
FRONT POCKET OPENING - FRONT POCKET OPENING	1/4	6	6	6	
FRONT POCKET BAG LENGTH - CLOSEST TO CF	1/4	12	11 1/4	12	BTS
FRONT POCKET BAG BOTTOM WIDTH	1/4	7	6 1/2	7	BTS
BK PKT VERT. PLCMT FROM WB SEAM: @ CB	1/8	2 1/4	2 1/4	2 1/4	
BK PKT VERT. PLCMT FROM WB SEAM: @ SS	1/8	2	2 1/4	2	BTS
BK PKT HORIZONTAL PLCMT: CENTER OF DN TPST @ RISE	1/8	1 3/4	1 3/4	1 3/4	
BACK PATCH POCKET WIDTH @ TOP	1/8	6 1/2	6 1/2	6 1/2	
BACK PATCH POCKET HEIGHT @ CENTER	1/8	6 3/4	6 5/8	6 3/4	BTS
TOOL POCKET WIDTH	1/8	4	4	4	
TOOL POCKET HEIGHT @ @ CB	1/8	7 1/2	7 1/2	7 1/2	
TOOL POCKET HEIGHT @ @ SS	1/8	5 3/4	5 3/4	5 3/4	
SMALL PATCH TOOL POCKET HEIGHT @ CENTER	1/8	5	5	5	
BACK WB LEATHER TAB FR CB RISE, ON WR	1/8	2 1/2	2 1/4	2 1/2	BTS

STYLE #:	EP00012	SAMPLE SIZE:	32	FACTORY:	GUOSHENG	DESIGNER:	TIMOSHA K
DESCRIPTION:	DENIM INDUSTRY PANT	SIZE RANGE:	26-38	SEASON:	FALL 2023	SENT:	04.19.23

*Sketches, Artwork & Washes shown are for representation only. Please refer to actual samples and subbits for color/technique.

DATE: 4/19/23
 FITTING ATTENDEES: JUSTIN,
 KELLY, TIMOSHA, WAYNE
 FIT ON: JOHNNY, SIZE 32

NOTES :

PATTERN CORRECTION

1. SEE NOTES NEXT TO SPECS

CONSTRUCTION CORRECTIONS:

2. N/A

TRIM CORRECTIONS

3. MOVE LEATHER PATCH ON
 BACK BODY TO BE AT WR SIDE

PLEASE SEND PP ONCE TRIMS ARE APPROVED.



STYLE #:	EP00012	SAMPLE SIZE:	32	FACTORY:	GUOSHENG	DESIGNER:	TIMOSHA K
DESCRIPTION:	DENIM INDUSTRY PANT	SIZE RANGE:	26-38	SEASON:	FALL 2023	SENT:	04.19.23

*Sketches, Artwork & Washes shown are for representation only. Please refer to actual samples and sumbits for color/technique.